



---

---

---

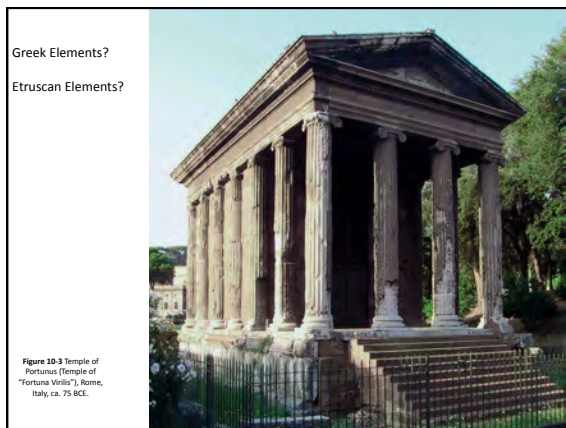
---

---

---

---

---



---

---

---

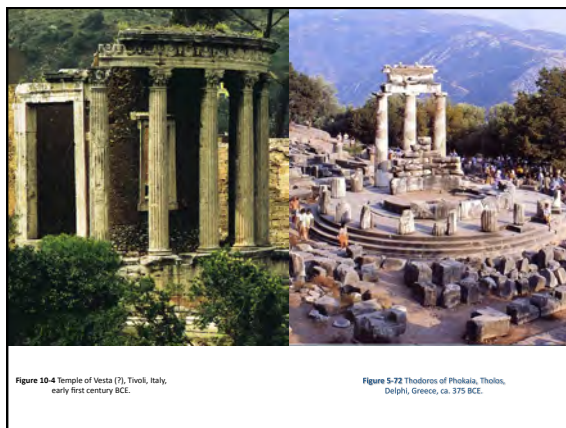
---

---

---

---

---



---

---

---

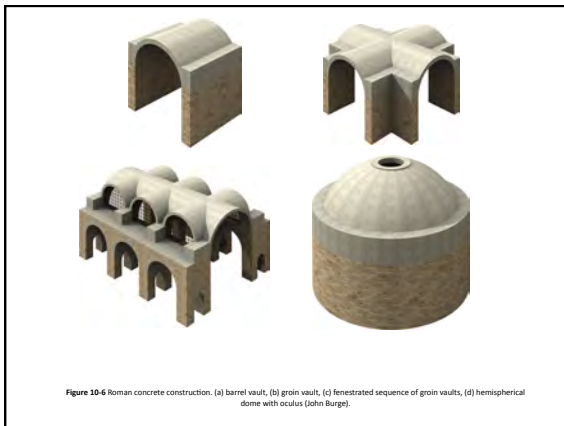
---

---

---

---

---



---

---

---

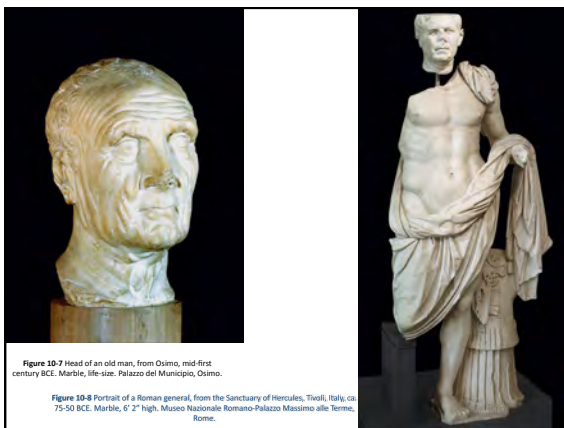
---

---

---

---

---



---

---

---

---

---

---

---

---



---

---

---

---

---

---

---

---



Figure 10-13 Aerial view of the amphitheater, Pompeii, Italy, ca. 70 BCE.

---

---

---

---

---

---

---

---

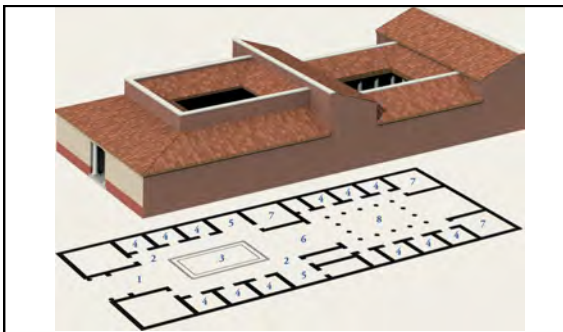


Figure 10-16 Restored view and plan of a typical Roman house of the Late Republic and Early Empire (John Burge). (1) fauces, (2) atrium, (3) impluvium, (4) cubiculum, (5) ala, (6) tablinum, (7) triclinium, (8) peristyle.

---

---

---

---

---

---

---

---

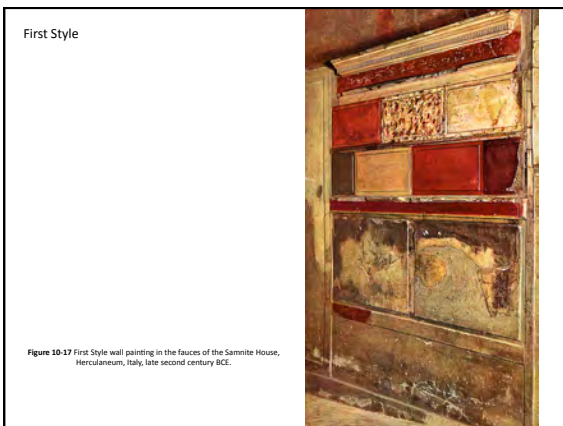


Figure 10-17 First Style wall painting in the fauces of the Samite House, Herculaneum, Italy, late second century BCE.

---

---

---

---

---

---

---

---

Second Style



Figure 10-18 Dionysiac mystery rite, Second Style wall paintings in Room 5 of the Villa of the Mysteries, Pompeii, Italy, ca. 60-50 B.C.E. Fresco, frieze 5' 4" high.

---

---

---

---

---

---

---

---

Third Style



Figure 10-21 Detail of a Third Style wall painting, from cubiculum 15 of the Villa of Agrippa Postumus, Boscoreale, Italy, ca. 10 B.C.E. Fresco, 7' 8" high. Metropolitan Museum of Art, New York.



---

---

---

---

---

---

---

---

Fourth Style

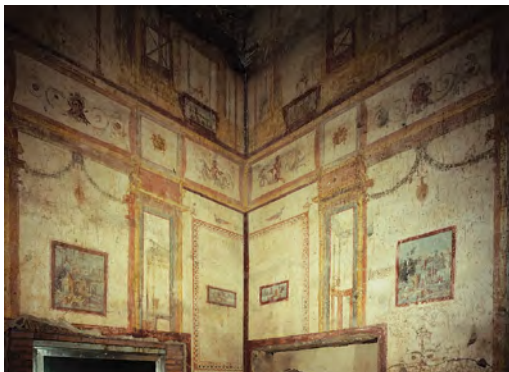


Figure 10-22 Fourth Style wall paintings in Room 78 of the Domus Aurea (Golden House) of Nero, Rome, Italy, 64-68 C.E.

---

---

---

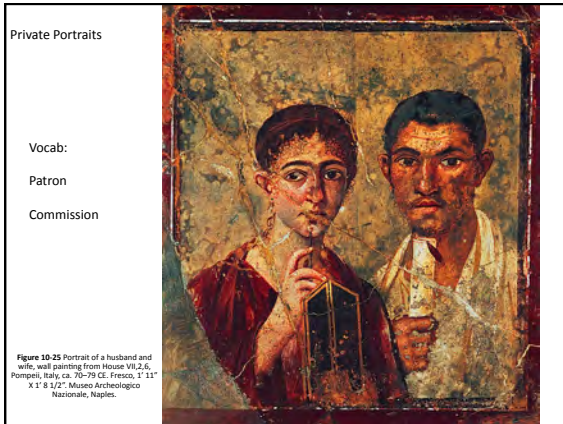
---

---

---

---

---



---

---

---

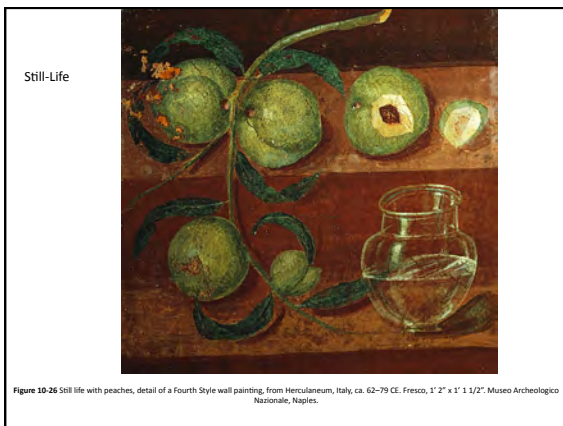
---

---

---

---

---



---

---

---

---

---

---

---

---